

## **Chapter 4. MONKEY BAR ADD-ON**

**CAUTION:** Monkey bars are not suited for all children because of strength and agility requirements. As with all playground equipment, proper adult supervision is required. Recommended for ages 5-12. Children should NEVER play on top of the monkey bar assembly.

### Required materials

- Monkey Bars (7 bars)
- Wood from Table 1
- (16) 3/8x2" galvanized lag screws
- (18) 3/8x4" galvanized lag screws
- (5) 3/8x7" galvanized carriage bolts
- (39) 3/8" flat washers, (39) lock washers and (5) 3/8" hex nuts

### NOTES:

**Diagram 1** Remove the (3) wall boards and then cut the upper wall support (2x4x5) to 31-3/4" length and cut the lower wall support (2x6x5) to 31-3/4" length as illustrated in Diagram 1. Redrill the holes in the cut end of the board in the identical configuration as the original boards.

**Diagram4.** You will need to modify the existing Fort Post #3 (Back Left) by drilling a 7/16" diameter thru hole in the post at the location shown.

**Diagram 5.** Two people are needed for this step. You will first need to measure out 92-1/2" from fort post #3 and use a shovel or post hole diggers (recommended) to dig a hole exactly 20" deep. It is very important that the back of the hole be lined up with the back of the fort post. Next, you will need to dig the hole for the second vertical support post 31-3/4" to the side from the first one.

**STEP 10.** Assemble Ladder Steps /Install Monkey Bars (Diagram 8)  
Place the monkey bars on the horizontal support posts approximately 12" apart. Use the holes in the monkey bars to mark hole positions in the horizontal support posts. Pre-drill with 1/4" diameter bit and use 2" lag screws and washers to attach. Note that monkey bars may not initially lie flat on the support posts, but they will flatten out as you tighten them down with the lag screws.

Table 1. Monkey Bar Add-On Wood Cut List

<u>Description</u>	<u>Size as Purchased</u>	<u>Qty Purchased</u>	<u>Cut to Size</u>	<u>Cut to Qty</u>	<u>Label Abbrev.</u>
Fort Step Support	4x4x8'	1	4x4x53-1/4"	1	FSS
Horizontal Bar Supports	4x4x8'	2	Trim to exactly 8'	2	HBS
Vertical Support Posts	4x4x10'	2	4x4x8'-10 3/4"	2	VSP
Ladder Steps	2x4x8'	2	2x4x31-3/4"	6	LS
Horizontal Brace	2x4x10'	1	2x4x102"	1	HB
Diagonal Braces	2x4x12'	1	2x4x66"	2	DB

Diagram 1. Modify Existing Fort Structure

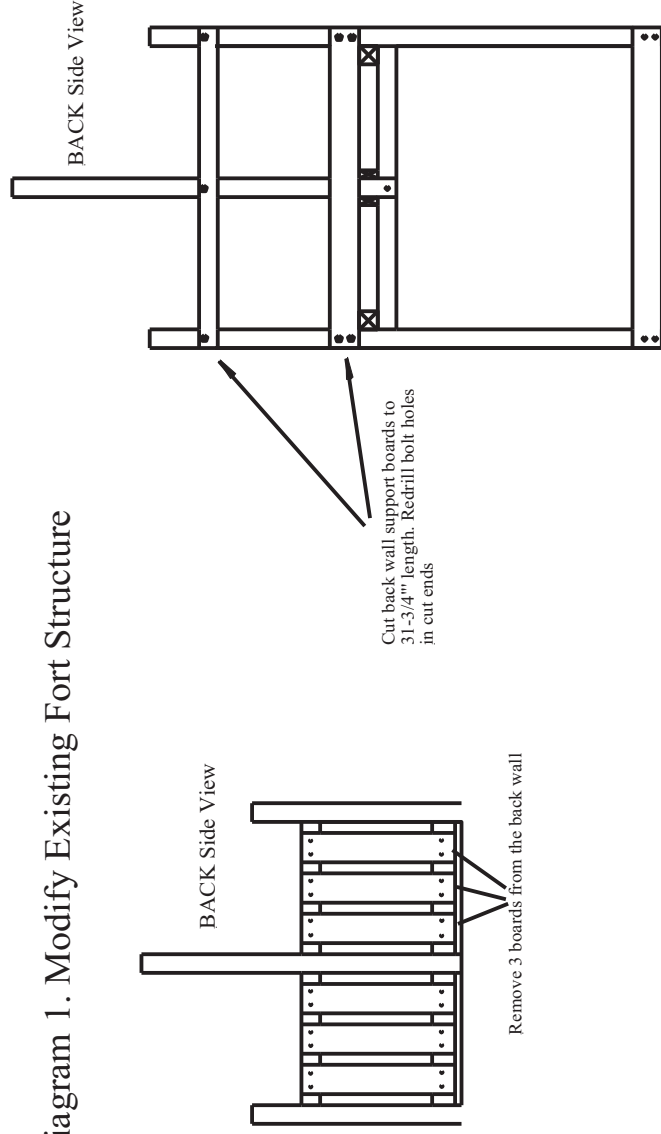
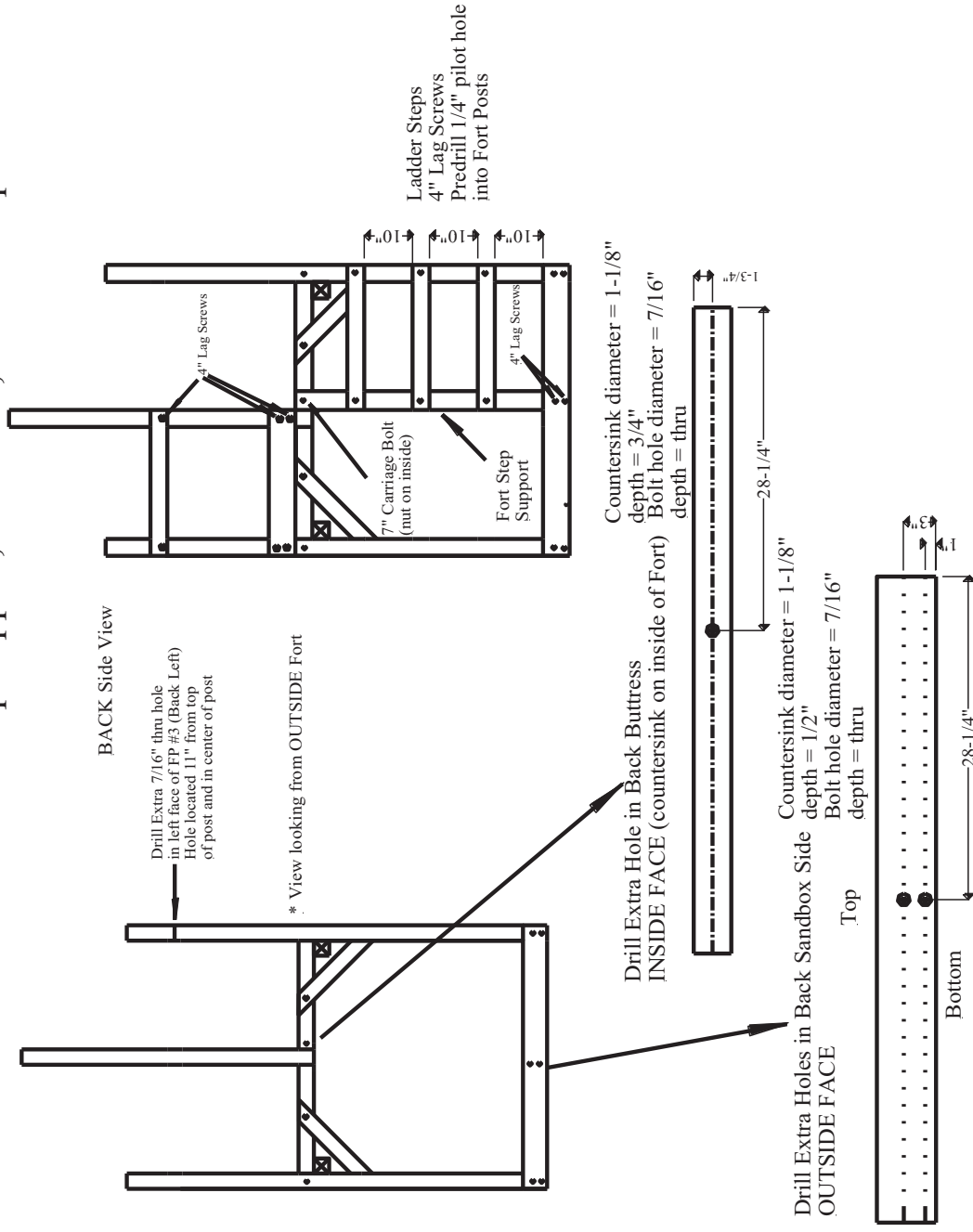
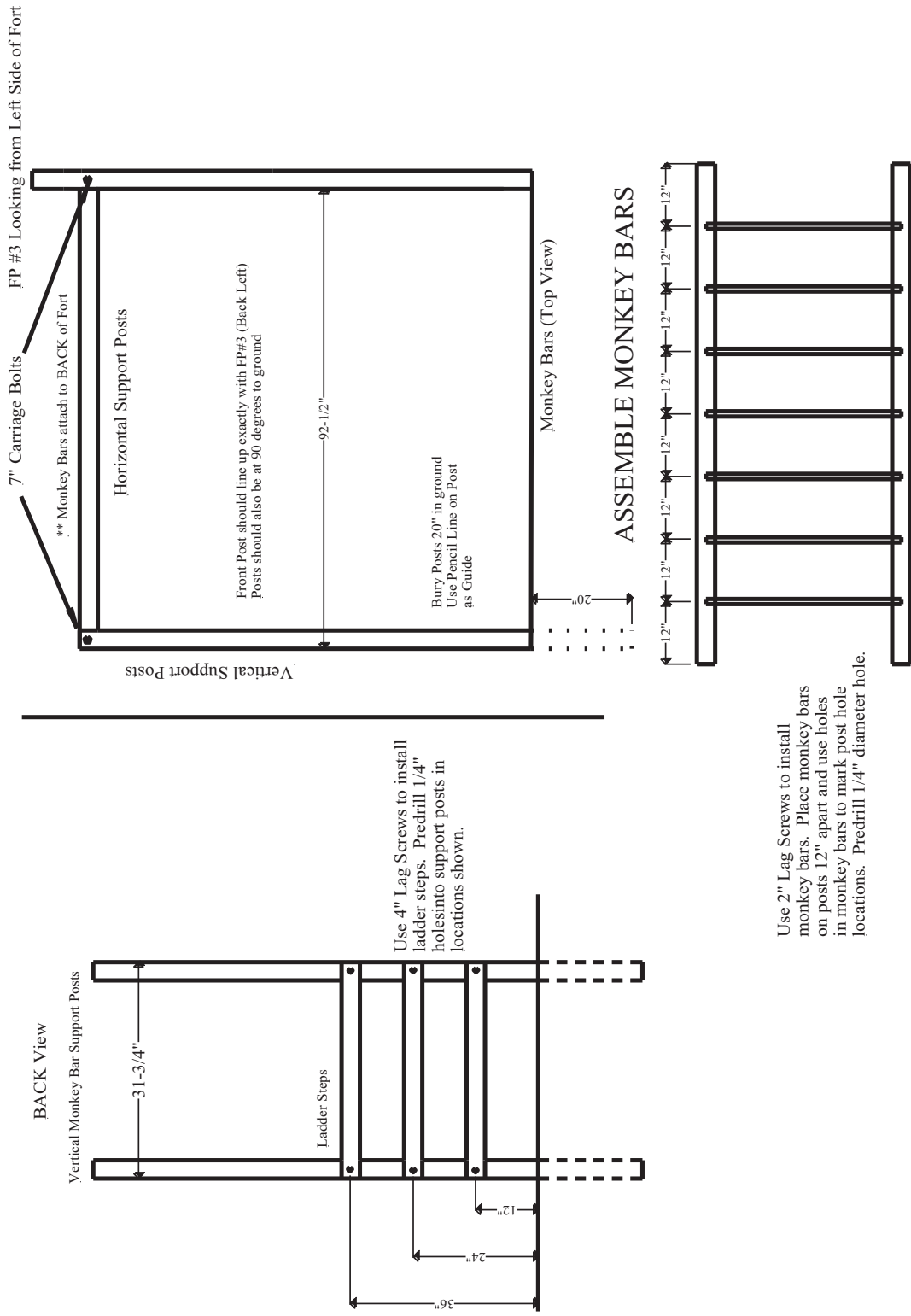




Diagram 4. Drill Extra Holes in Back Buttress, Sandbox Side, FP#3 Assemble Fort Step Support, Side Wall, Ladder Steps



# Diagram 5. ASSEMBLE VERTICAL AND HORIZONTAL SUPPORT POSTS



## Diagram 6. ASSEMBLE DIAGONAL SUPPORT STRUCTURE

