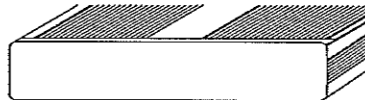
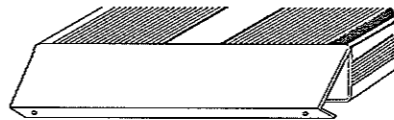


**SEATING PLAN**

SCALE: 3/8"=1'-0"

NET SEATS = 12

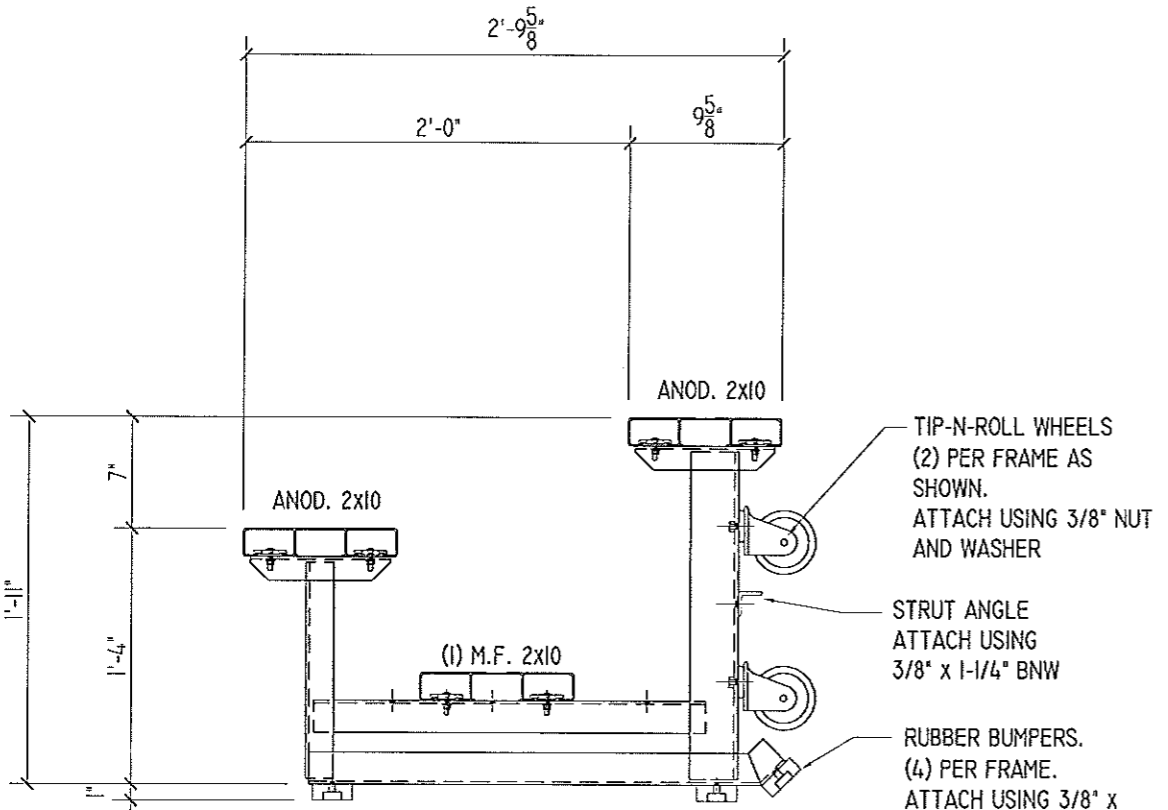


END CAP

1. LOCATE THE CHANNEL END CAP AS SHOWN, WITH THE WIDER FLANGE ON BOTTOM.
2. TAP THE CHANNEL INTO PLACE WITH A RUBBER Mallet OR SOFT WOOD.
3. DRILL (2) No.8 x 3/4" TEK SCREWS THRU END CAP AND BOTTOM FLANGE OF PLANK
4. ENDCAPS WITH STICKERS ARE TO GO AT ENDS OF SEAT PLANKS, PLAIN ENDCAPS GO ON ALL OTHER BOARDS.

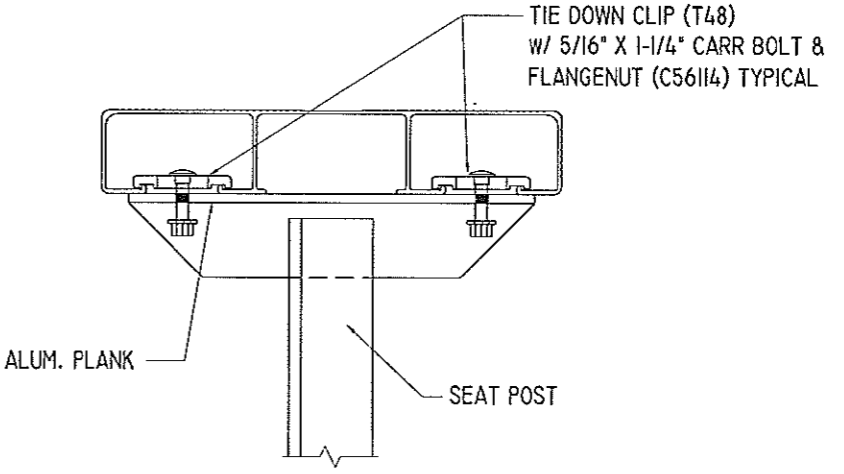
**ENDCAP INSTALLATION DETAIL**

SCALE: 3" = 1'-0"



**TYPICAL SECTION THRU BLEACHER**

SCALE: 1"=1'-0"



**SEAT PLANK INSTALLATION**

SCALE: 3" = 1'-0"