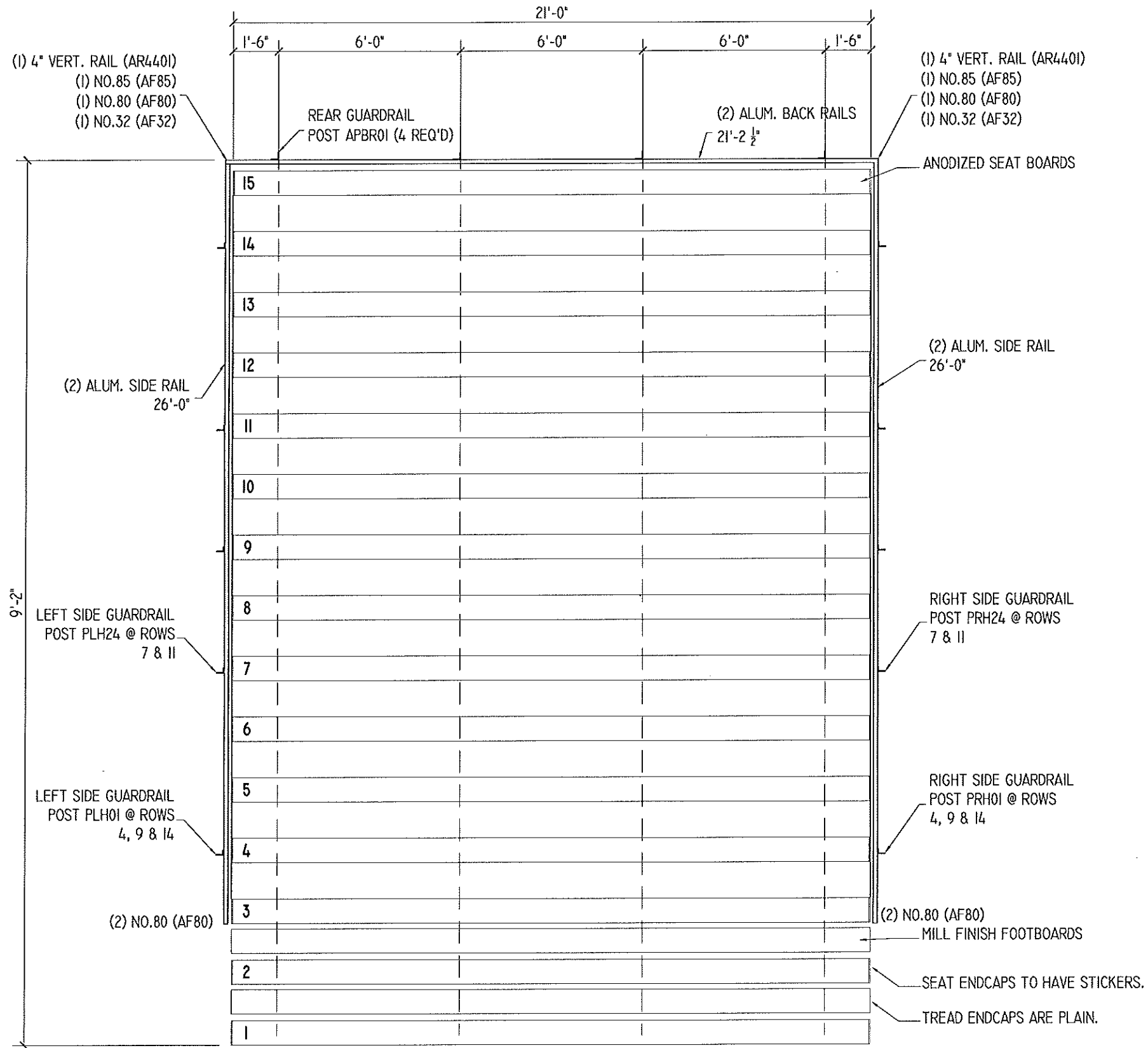
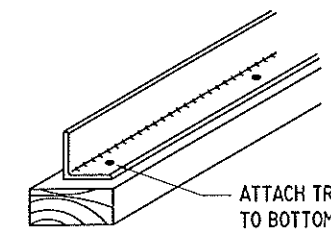


S:\Current Models\1.Standard Models\In Process\NR-15xAMC and NR-15xxGMC (-MS)\NR-15xAMC and NR-15xxGMC (-MS).dwg, 4/20/2011 9:14:45 AM



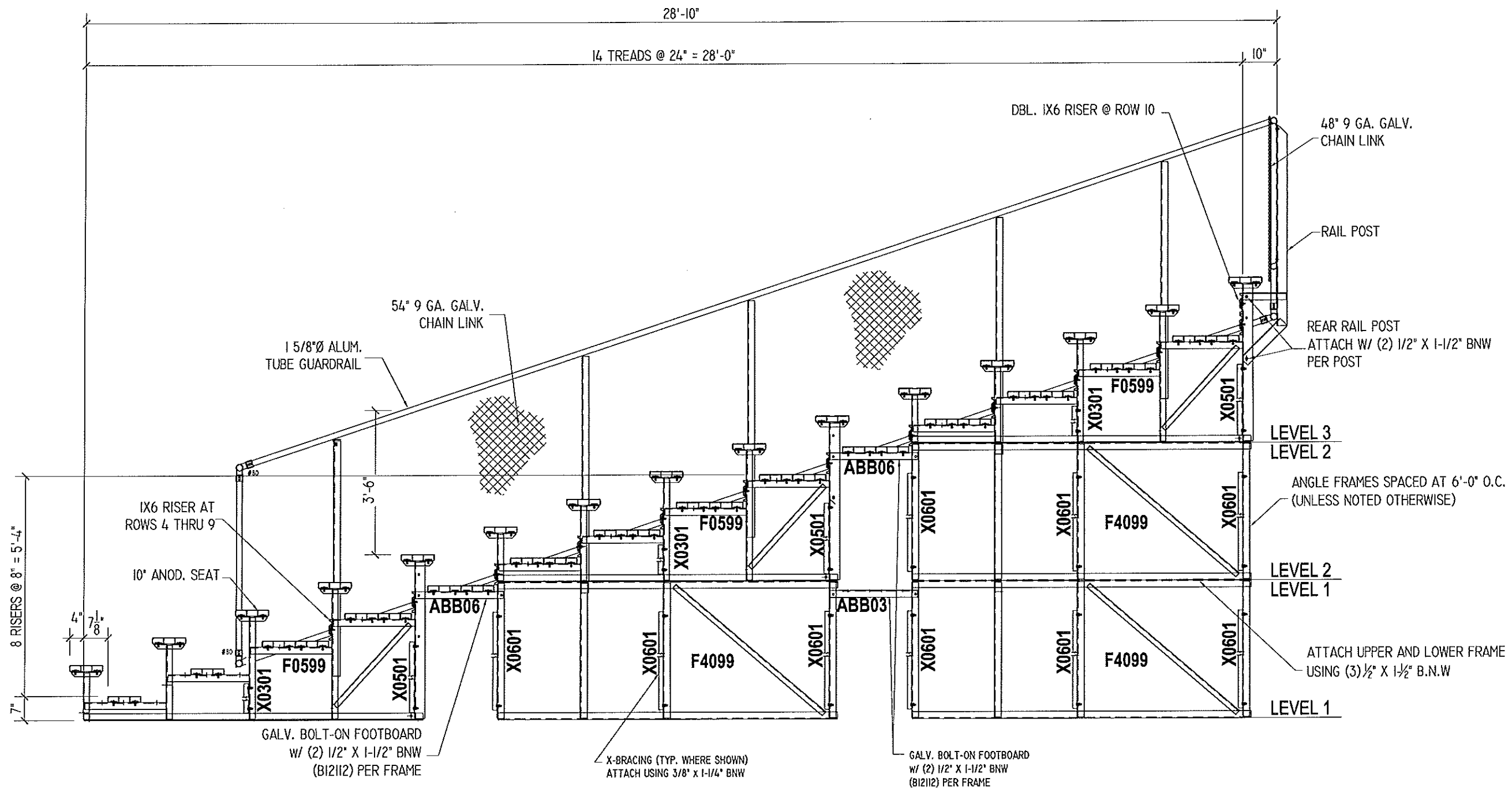
SEATING PLAN

SCALE: 1/4" = 1'-0"
NET SEATS = 210



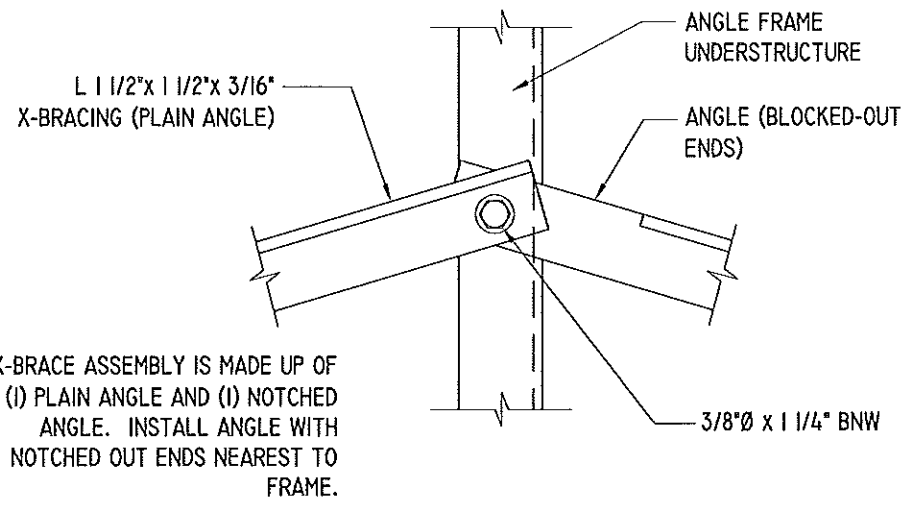
ATTACH TREATED WOOD SILL TO BOTTOM FRAME RUNNER USING 3/8" x 1-1/4" LAG SCREW WITH FLAT WASHER

MUD SILL ATTACHMENT



TYPICAL THRU END OF STAND

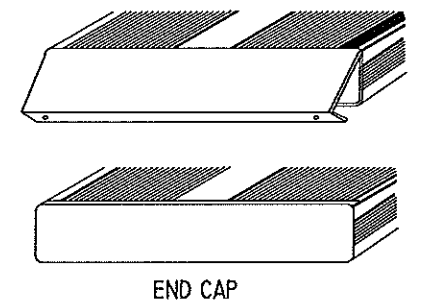
SCALE: 3/8" = 1'-0"



TYPICAL X-BRACE TO FRAME CONN.

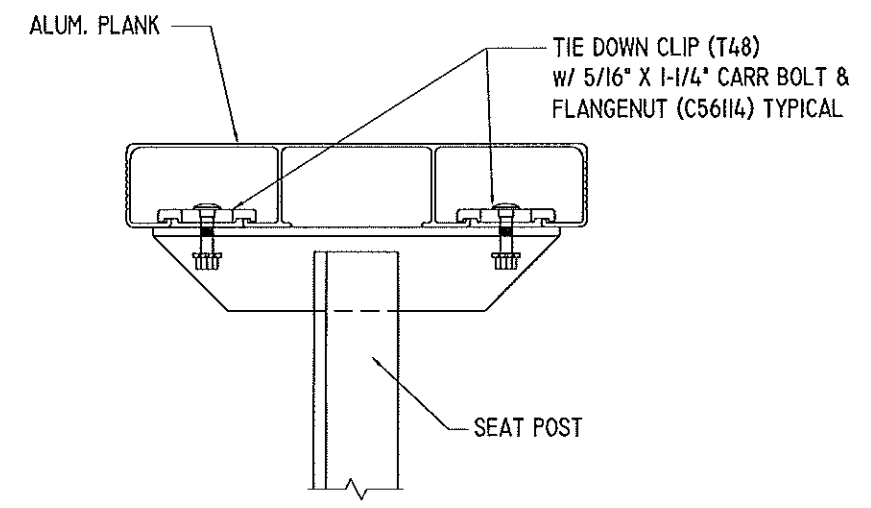
SCALE: 3" = 1'-0"

1. LOCATE THE CHANNEL END CAP AS SHOWN, WITH THE WIDER FLANGE ON BOTTOM.
2. TAP THE CHANNEL INTO PLACE WITH A RUBBER Mallet OR SOFT WOOD.
3. DRILL (2) No.8 x 3/4" TEK SCREWS THRU END CAP AND BOTTOM FLANGE OF PLANK
4. ENDCAPS WITH STICKERS ARE TO GO AT ENDS OF SEAT PLANKS, PLAIN ENDCAPS GO ON ALL OTHER BOARDS.



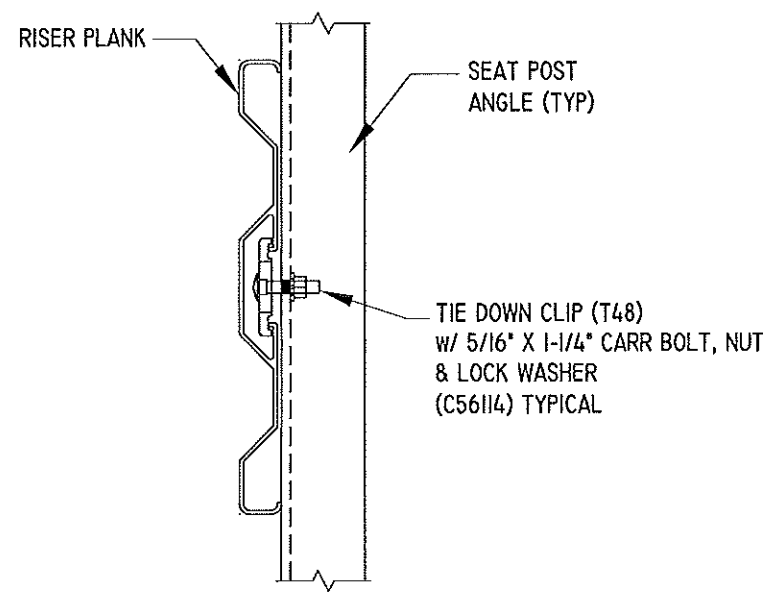
ENDCAP INSTALLATION DETAIL

SCALE: 3" = 1'-0"



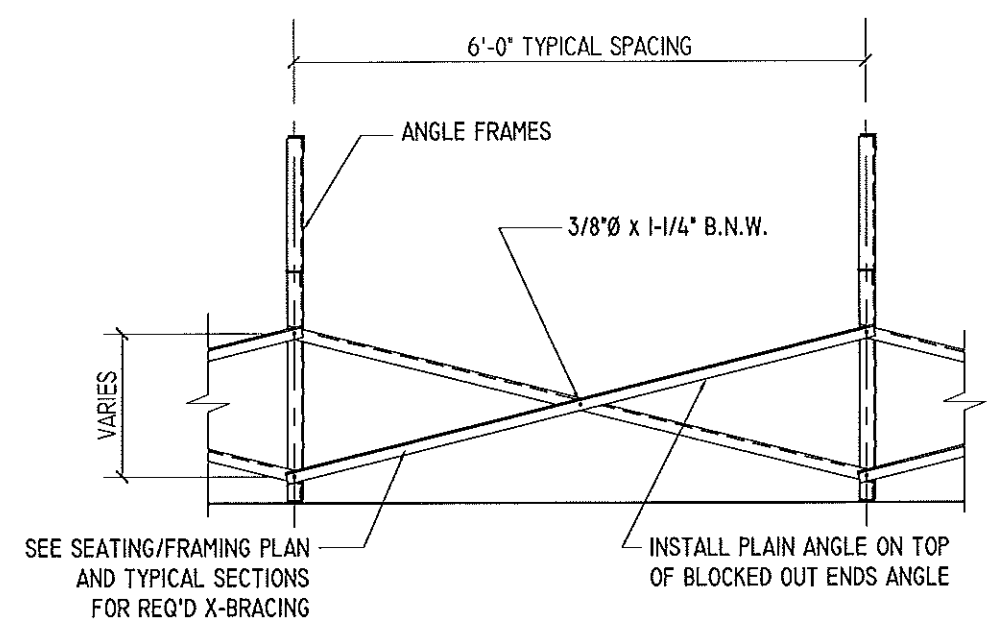
SEAT PLANK INSTALLATION

SCALE: 3" = 1'-0"



TYPICAL RISER INSTALLATION

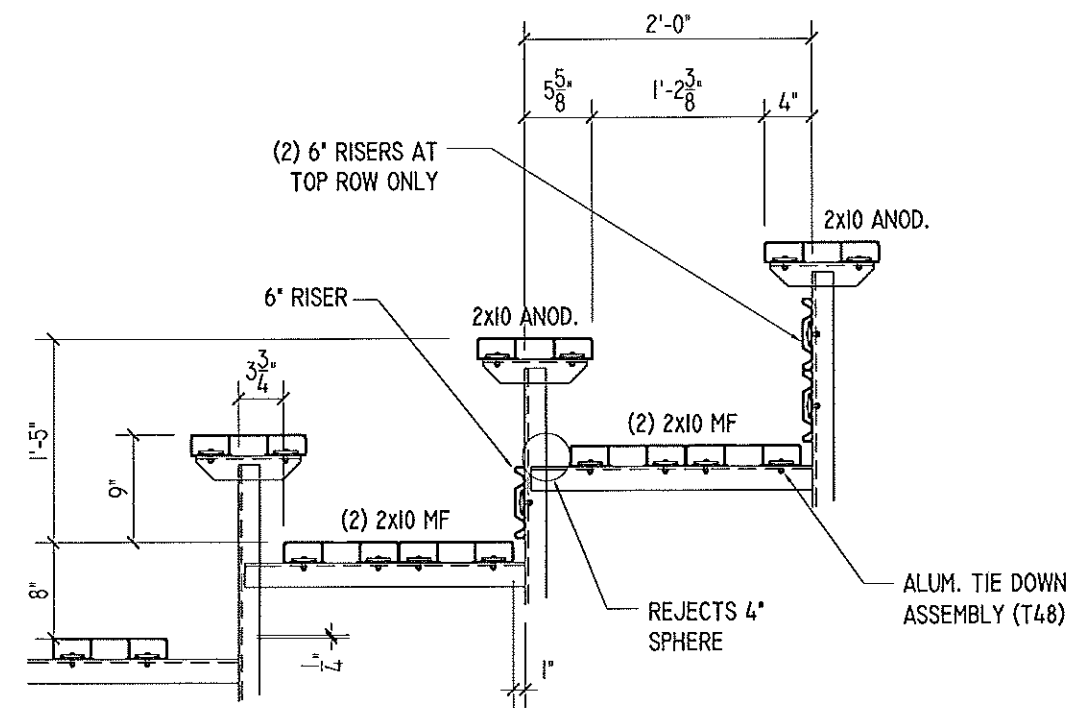
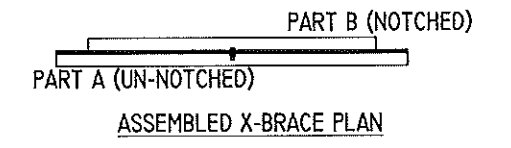
SCALE: 3" = 1'-0"



TYPICAL BRACING LAYOUT

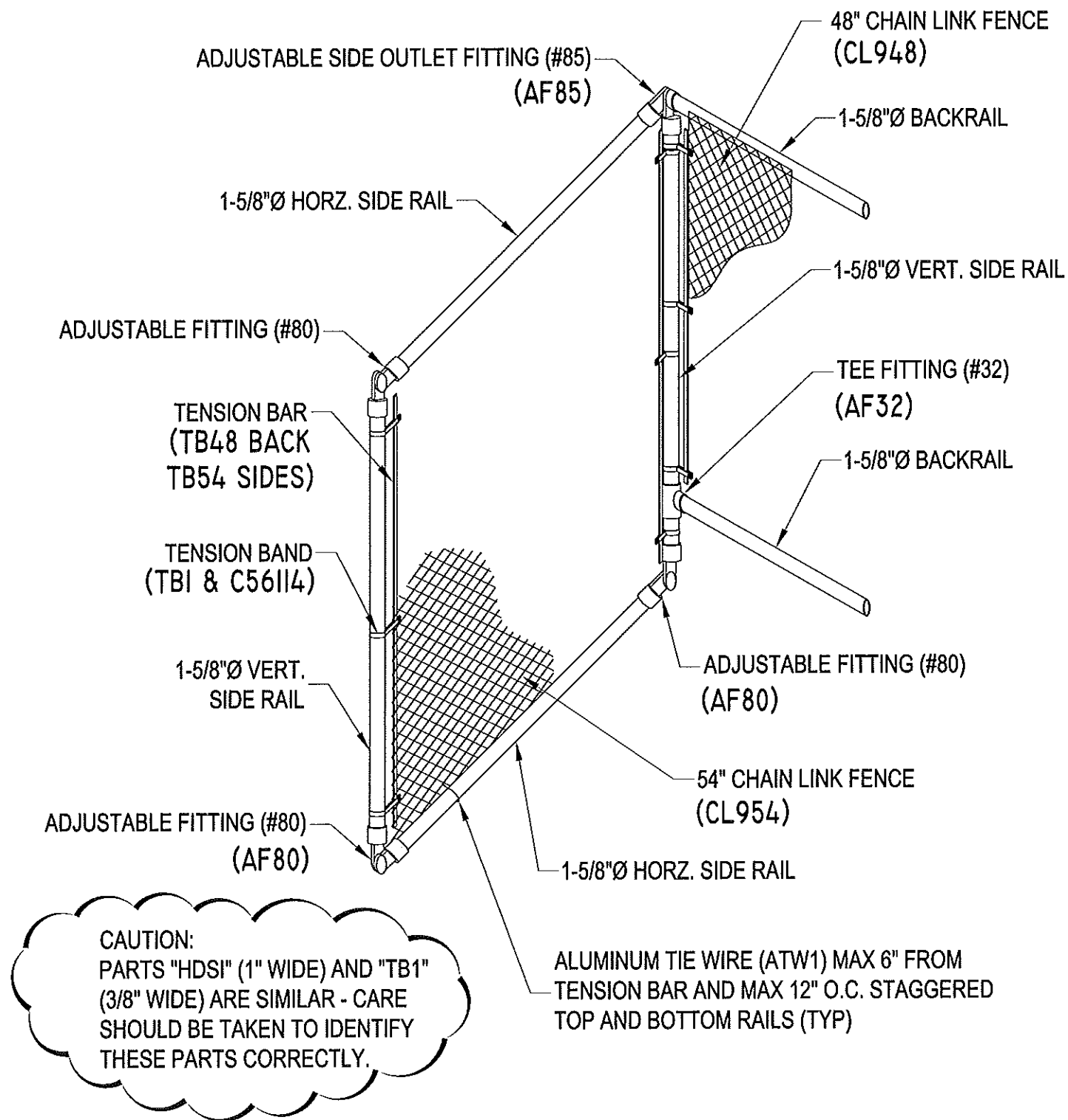
SCALE: 1/2" = 1'-0"

PRE-ASSEMBLE X-BRACE SETS. EACH SET CONSISTS OF A 'PART A (UN-NOTCHED)' AND A 'PART B (NOTCHED)'. PLACE THE PIECES TOGETHER AT THE FLAT SIDES AND CONNECT USING A 3/8" x 1-1/4" B.N.W.



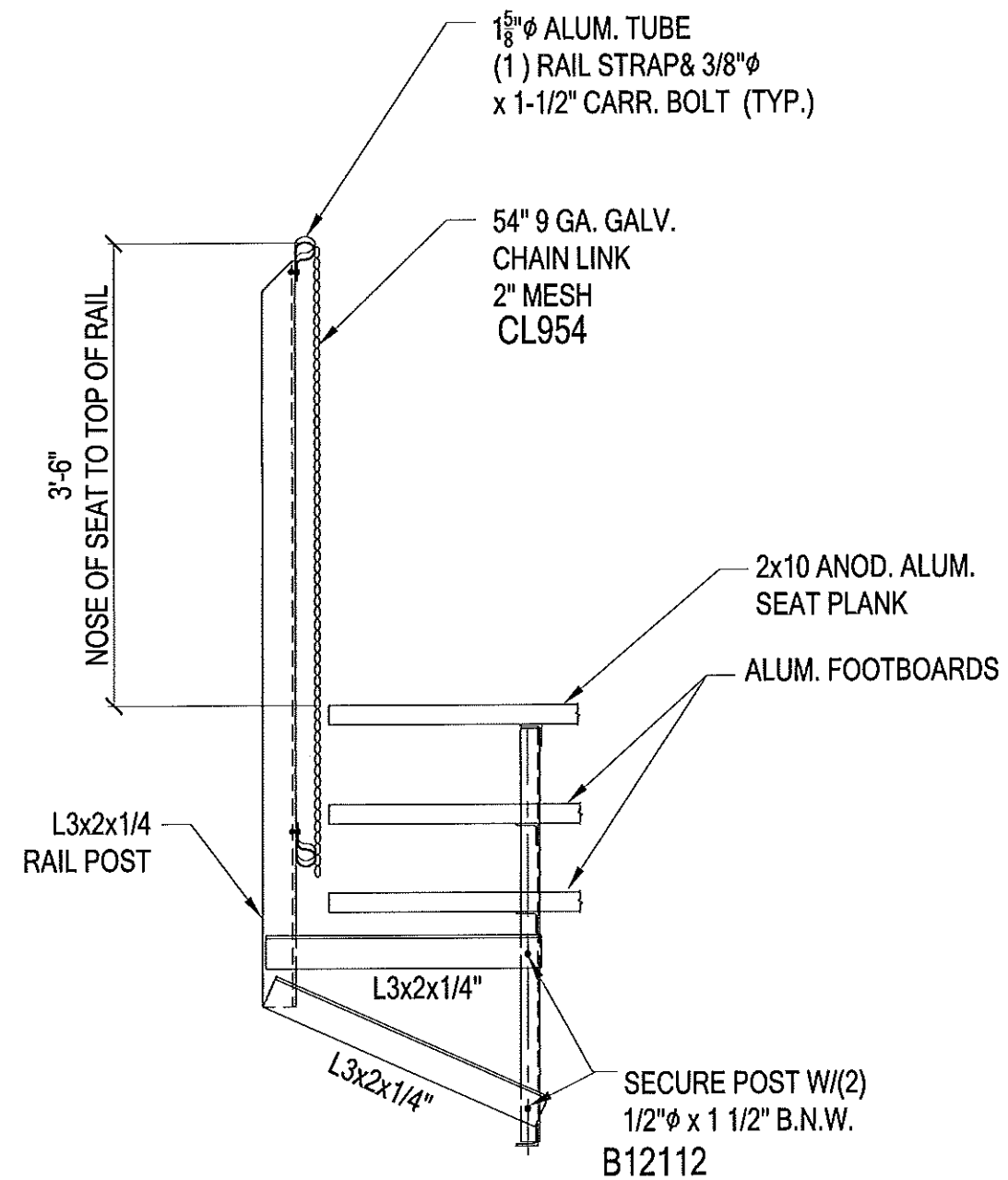
CONDITION AT SEATS

SCALE: 3/4" = 1'-0"



ISOMETRIC VIEW

CONNECTION DETAIL OF BACK RAIL TO SIDE RAIL



RAIL POST CONNECTION DETAIL